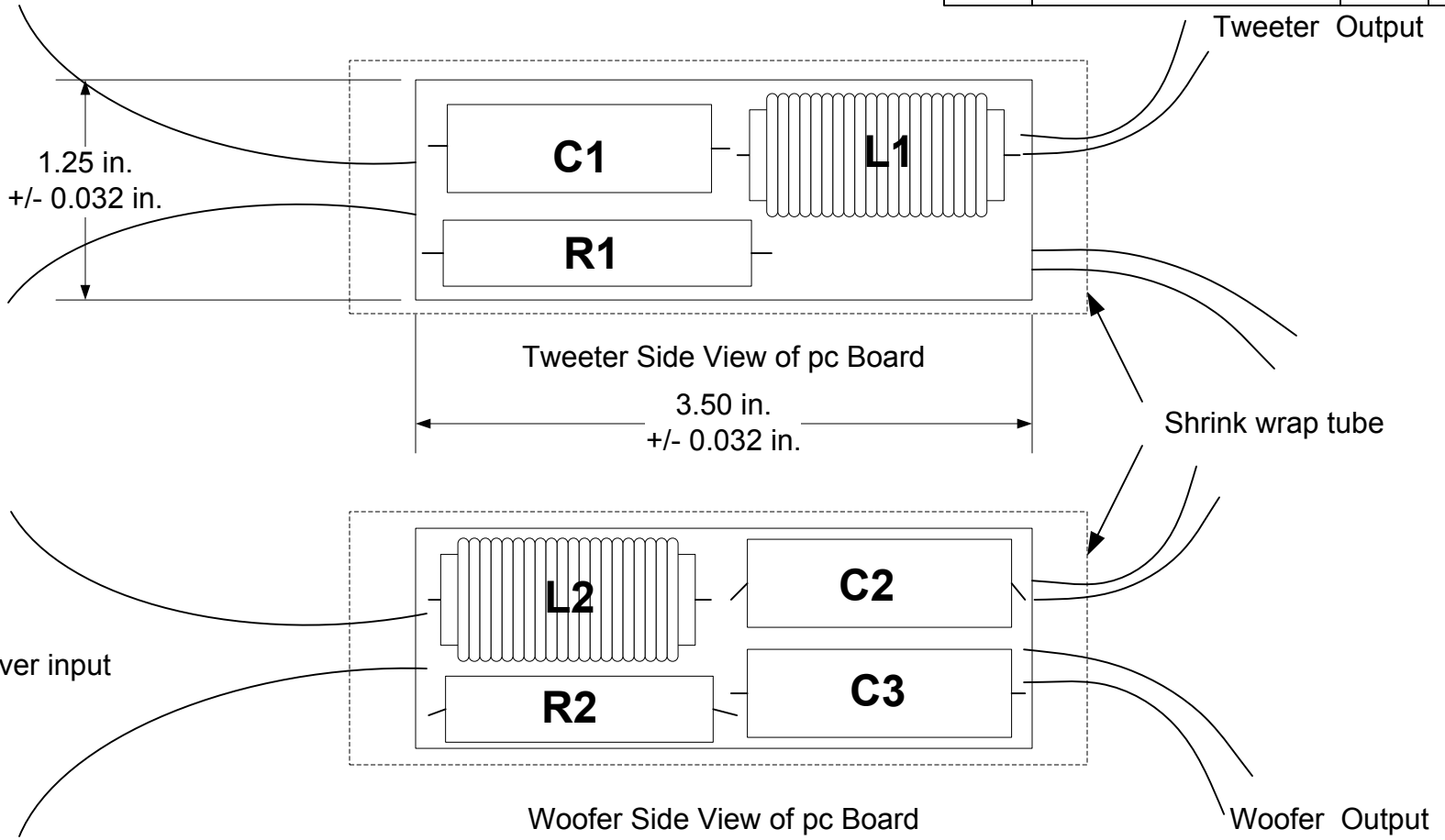



REV.	DESCRIPTION	DATE	BY
A	Release for Production	10-1-08	GC



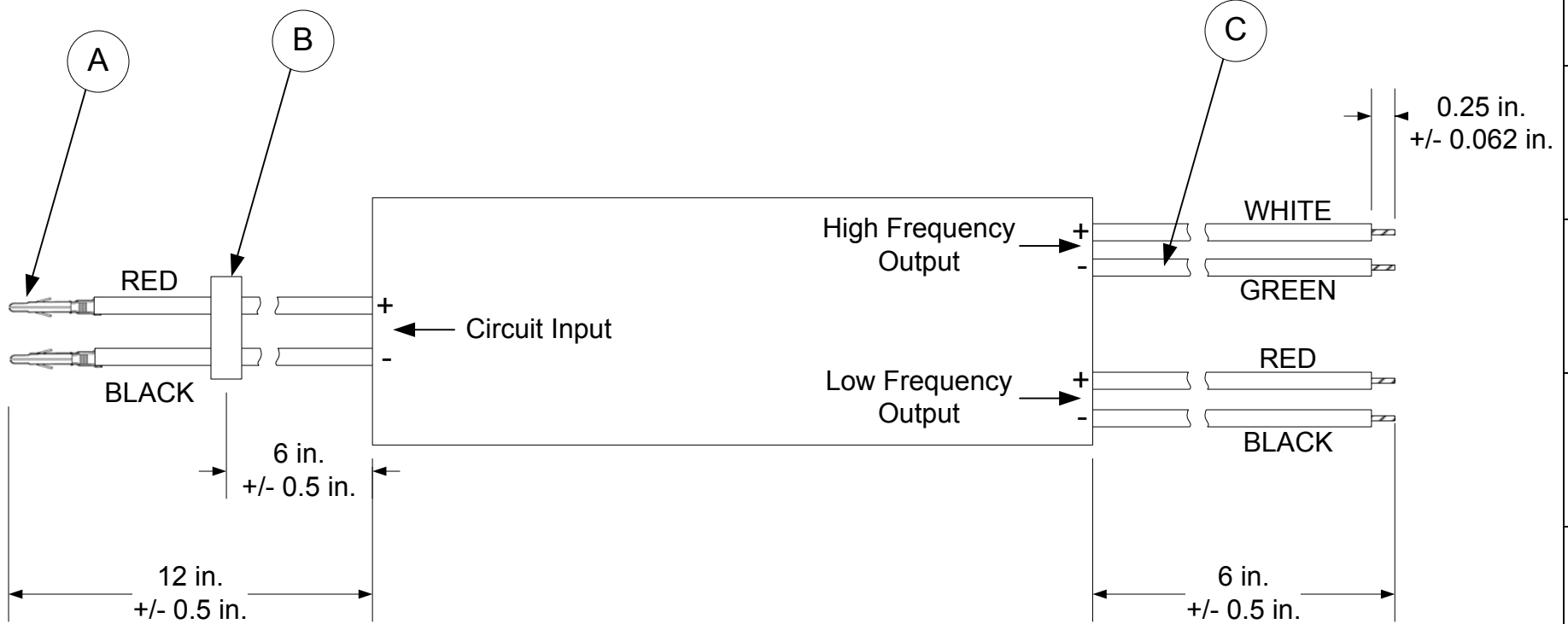
Notes:

- 1) In-line crossover to be built on double sided pc board and covered with shrink wrap tubing.
- 2) Inductors to be wound on low permeability ferrite cores.

 <b>Design Engineering</b>	Description <b>2<sup>nd</sup> Order BW Crossover at 4kHz</b>		
	Part Number <b>XO-01</b>		
Drawn by: G Church	SIZE A	Scale Do Not Scale	DWG NO <b>SH-3583</b>
Date: 3-19-2008	Checked by:	Approved by: GC	REV A
		SHEET	2 OF 3

ITEM	QTY.	MFG.	PART NO.	DESCRIPTION
A	2	Amp	350547-3	Terminal Pin, Crimp 14-20 AWG, Tin
B	1	Panduit or equiv.	PLT-1M-M69	Wire tie wrap
C	6	Alpha or equiv.	3055	Wire, 18 AWG, stranded

REV.	DESCRIPTION	DATE	BY
A	Release for Production	10-1-08	GC



Description **Wiring Detail**

Part Number **XO-01**

Drawn by: G Church	SIZE A	Scale Do Not Scale	DWG NO SH-3583	REV A
Date: 9-9-2008	Checked by:	Approved by: GC	SHEET 3 OF 3	